



Instrumental practice  
an extension of  
musical education

## Introducing

The Willems® approach is based on the existing psychological relationships between music, the human being and the surrounding world. The study of their constituent elements and their respective orders has enabled the development of a progression that draws inspiration from them, respects them and develops them.

It's an active musical and instrumental education that calls on receptivity, impregnation and reproduction, but also on self-expression and inventiveness.

This event has the following objectives: to discover, experiment with and deepen Edgar Willems' pedagogical approach; to explore the transmission of vocal and instrumental art; and to combine Edgar Willems' thinking with the experience of the guest performers.

## Planning / timetables

### Course duration :

- Sunday 13 July: welcome, registration, documents from 2pm
- From Monday 14.07 at 9.30 am to Saturday 19.07 at 6 pm

*See detailed schedule in Annex 1.*

Total number of hours : 35 hours of lessons and concerts

## Programme

### → Public courses - Practical lessons :

The Willems® pedagogy covers a very broad spectrum of musical education, from early childhood through to music training (solfege). In these lessons, the aim is to explore the main thrusts of the Willems® progression, to define its characteristics and to explore the creative nuances of concrete achievements: observation, debate, pedagogical practice.

*With the participation of children from Willems® associated music schools in the Lyon region.*

### → Practical workshops :

- **The 3rd and 4th Willems degrees** : content and teacher preparation; practical lessons on each of these two levels with Franca Cividino and Christophe Voidey ;
- **Practical keyboard harmony** with Christophe Voidey ;
- **Instrumental teaching**, towards the art of the piano with Nicolas Stavy, the violin with Marie-Annick Nicolas and the cello with Patrick Gabard;
- **Voice, singing and improvisation** with four singers from the Spirito choir;
- **Choral conducting** with Thibaut Louppe.

### → Concerts : every day (except Friday 18.07).

Admission to the concerts is free for trainees.

#### **Monday 14.07 - 8.45pm**

Chartreux Great Hall

Piano recital by Nicolas Stavy

#### **Tuesday 15.07 - 8.45pm**

Chartreux Great Hall

Violin recital by M-Annick Nicolas;

piano: Agnès Graziano

#### **Wednesday 16.07 - 4pm and 5.30pm**

Chartreux Great Hall

Zoophonia show

by 4 singers from the Spirito choir

#### **Thursday 17.07 - 8.45pm**

Chartreux Great Hall

String trio chamber music concert  
with Patrick Gabard, Cello

#### **Saturday 19.07 - 10.45am**

Chartreux Great Hall

Chamber music concert

Laura Cividino (viola)

& Franca Cividino (piano)

#### **Saturday 19/07 - 5pm**

Primatiale St-Jean-Baptiste, Lyon

Closing concert by the Willems®  
International Choir.

Conductor: Clara Baget

Vocal preparation: Benjamin Lunetta

Piano: Benjamin d'Anfrey

### → Conferences :

Conferences are open to the general public.

#### **Monday 14.07 - 6pm** – Chartreux Great Hall

The Willems movement: an illustrated story

Béatrice Chapuis

#### **Tuesday 15.07 - 6pm** – Chartreux Great Hall

Sensory training of the harmonic ear

Isabelle Brétaudeau

#### **Thursday 17.07 - 6pm** – Chartreux Great Hall

Music writing for young musicians

Pierre Chépélov

#### **Friday 18.07 - 6pm** – Chartreux Great Hall

The creative act in artistic practice from an early age

Joël Clerget

#### **Saturday 19.07 - 9.30am** – Chartreux Great Hall

Qualities and role of the teacher

Mateja Tomac Calligaris

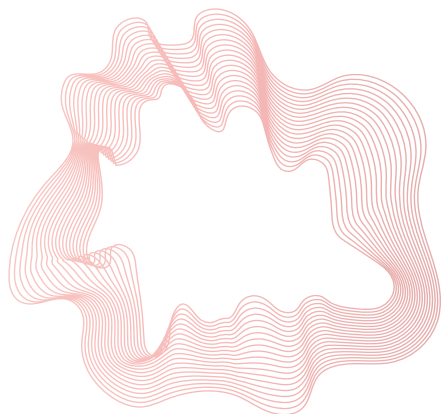
## Training process

### → Recruitment / Prerequisites

This event, which is open without pre-requisites, is aimed at members of the Willems® International Federation, as well as anyone who is a musician, music education or training teacher, instrumentalist, piano, string instrument or singing teacher, choral conductor or simply a music lover who is sensitive to the objectives presented.

### → Access time

No minimum number of participants is required to run the course. Once the information has been distributed and the enrolment campaign opened (at least 1 ½ months before the start of the course), trainees can enrol up until 10 July.



## Locations



**Les Chartreux St-Irénée**  
10 avenue Debrousse 69005 LYON  
[Google Maps](#)  
Venue for courses + conferences  
+ concerts from 14 to 19/07

**ICOF**  
8 avenue Debrousse 69005 LYON  
[Google Maps](#)  
Venue for courses from 14 to 19/07



**Cathédrale Saint-Jean Baptiste de Lyon**  
8 place Saint-Jean 69005 LYON  
[Google Maps](#)  
Venue for the concert on 19.07

### Accessibility for people with disabilities

Most of the venues where International Willems Federation® training courses are held comply with PRM standards. It is essential to contact the FIW in advance so that it can plan ahead and make the necessary arrangements to provide the best possible welcome.

## Training Resources & Outcomes

### → Methods for monitoring the implementation of the action and assessing its results

- Attendance sheets, drawn up for each day of training, will be signed by the trainees and the trainer(s), certifying that the training has been completed.
- On the last day of each training session, the trainer(s) and trainees will hold a debriefing session during which they will exchange views and discuss the course.
- At the end of the course, a satisfaction questionnaire will be distributed to the various parties involved (trainees/employers/trainers) to gather their feedback, assessments and opinions (positive points, negative points and/or points for improvement).

### → Course outcome(s)

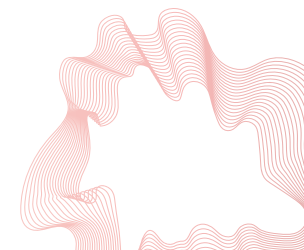
At the end of the session, FIW will issue each trainee with a certificate specifying the nature, skills acquired and duration of the session.

### → Regulations

The various regulations relating to the Training Courses and the Organisation can be consulted and downloaded from the Willems® International Federation website [www.fi-willems.org/en](http://www.fi-willems.org/en) or sent by email on request.

- Internal regulations / Willems® International Federation
- Internal Regulations / Willems® International Federation - Health - Safety - Discipline
- Terms and Conditions / Willems® International Federation

> **Consult the regulations**



# Pricing / Payment / Cancellation

## Pricing

### Teaching costs

Prices exclude transport, accommodation and meals.

Conference rates (6 days - 35 hours of classes and concert)		
T1	Full rate 1 (sliding scale) / registrations from 15/04 to 14/05	<b>590 €</b>
T2	Full rate 2 (sliding scale) / registration from 15/05 to 14/06	<b>610 €</b>
T3	Full price 3 / registration from 15/06 to 13/07	<b>630 €</b>
T4	Reduced rate for FIW Members Solidarity rate on presentation of proof (minimum social benefits / disability / student...)	<b>560 €</b>
T5	Fees for Willems® Long Course trainees	<b>372 €</b>
T6	Day rate (1 day / 7 hours of lessons)	<b>150 €</b>
T7	Workshop fee (5 days / 6h15 lessons / 5X1h15)	<b>150 €</b>

- Rates not subject to VAT (VAT not applicable, article 293B of the French General Tax Code).
- Trainees working in FIW associate member schools who are up to date with their 2025 membership fees benefit from a preferential flat rate of **570€** (for individual registration).
- T4/T5 rates apply to members who **have paid their 2025 membership fee and their training fees.**

## Additional costs

Fees for the use of the premises are added to the educational costs. This daily fee is €5 per day of participation, i.e. €30 for the duration of the congress.

Transport costs are not covered by the conference organisers. We offer two types of accommodation (one on site and one in the immediate vicinity). Lunch and dinner can also be taken at the conference venue. [\(See appendix 5\)](#). Room and meal reservations must be made at the time of registration, before 15 June.

## Payment

- A deposit of **150€** is payable on registration.
- Balance to be paid in one, two or three instalments before 13 July 2025.

In the event of non-compliance with this commitment, FIW reserves the right to demand payment of the balance without delay.

### → Payment methods

1. By cheque FR (payable to the Willems International Federation)
2. By bank transfer to the FIW account at the Banque Postale (IBAN references)
3. By [PayPal](#) bank transfer (if bank transfer Banque Postale not possible)

Bank code 20041	Code Guichet 01007	Account number 1594484H038	RIB key 10	Bank La Banque Postale
IBAN : FR65 2004 1010 0715 9448 4H03 810				BIC : PSSTFRPPLYO

## Cancellation policy

- In the event of withdrawal up to 8 days before the start of the course, a flat-rate compensation fee of €150 will be retained (corresponding to the deposit paid at the time of enrolment).
- In the event of withdrawal less than 8 days before the start of the course, no reimbursement will be possible; the full amount of the enrolment fee remains payable (tuition and user fees).
- In the event of withdrawal due to force majeure and on presentation of proof, only a flat-rate compensation of €50 will be withheld.

### → Mutual commitment between trainees and FIW

- In the event that the training service is not delivered (in whole or in part), FIW will reimburse the trainees unequally for the sums received.
- Trainees undertake to pay the registration fees in accordance with the conditions set out in the registration documents. In the event of non-payment and after the usual reminders, the file will be handed over to an independent debt collection service: France-Recouvrement.

## Registration / information

### → Registrations

The registration form (**Appendix 3**) must be completed, signed and returned by e-mail before 10 July to [contact@fi-willems.org](mailto:contact@fi-willems.org) or to the following postal address: Willems® International Federation - 46 rue Bugeaud - 69006 Lyon (France)

**Once you have registered, you will receive confirmation by e-mail.**

### → Information

☎ +33 (0)6.18.16.54.38  
(office hours: Monday, Thursday, Friday > 9am-12.30pm & Tuesday > 9am-12.30pm / 2pm-4.30pm)

✉ [contact@fi-willems.org](mailto:contact@fi-willems.org)

🌐 [www.fi-willems.org](http://www.fi-willems.org)



### Annexes to download :

- 1- Detailed planning
- 2- Workshop presentation
- 3- Registration form
- 4- Speakers' biographies
- 5- Information about accommodation and meals



📍 46 rue Bugeaud – 69006 Lyon (FR)

☎ +33 (0)6.18.16.54.38

✉ [contact@fi-willems.org](mailto:contact@fi-willems.org)

🌐 [www.fi-willems.org](http://www.fi-willems.org)

Association enregistrée à la Préfecture du Rhône sous le N° W691063767 / APE N° 8559B / SIRET N° **327 237 566 00077** / Déclaration d'activité enregistrée sous le N° **82 69 12756 69** auprès du Préfet de région d'Auvergne-Rhône-Alpes (Cet enregistrement ne vaut pas agrément de l'État.)